



Test Report

Report No. A222042772210100101

Page 1 of 7

Company Name CWB ELECTRONICS (ZHEJIANG) CO.,LTD.
shown on Report
Address 1098,XINGFU ROAD (EAST),CWB INDUSTRIAL ZONE,HONGQIAO,YUEQING,ZHEJIANG

The following sample(s) and sample information was/were submitted and identified by/on the behalf of the applicant

Sample Name Connector
Material PA66
Part No. PA66
Sample Received Date Sep. 23, 2022
Testing Period Sep. 23, 2022 to Sep. 27, 2022

Test Requested As specified by client, to test Lead (Pb), Cadmium (Cd), Mercury (Hg), Hexavalent Chromium (Cr(VI)), Polybrominated Biphenyls (PBBs), Polybrominated Diphenyl Ethers (PBDEs), Phthalates (DBP, BBP, DEHP, DIBP) in the submitted sample(s).

Test Method/Test Result(s) Please refer to the following page(s).

Conclusion

Table with 3 columns: Tested Sample, According to standard/directive, Result. Row 1: Submitted Sample, RoHS Directive 2011/65/EU with amendment (EU) 2015/863, PASS

PASS means that the results shown on the report comply with the limits set by RoHS Directive 2011/65/EU with amendment (EU) 2015/863.

Tested by Leslie Liang

Reviewed by Helen Liu



Approved by Hill Zheng
Hill Zheng
Technical Manager

Date Sep. 27, 2022

No. R262621217

Centre Testing International Group Co.,Ltd.

CTI Building, Xing Dong Community, Xin'an Sub-district, Bao'an District, Shenzhen City, Guangdong Province, P.R. China

Test Report

Report No. A222042772210100101

Page 2 of 7

Test Method

Tested Item(s)	Test Method	Measured Equipment(s)
Lead (Pb)	IEC 62321-5:2013	ICP-OES
Cadmium (Cd)	IEC 62321-5:2013	ICP-OES
Mercury (Hg)	IEC 62321-4:2013+AMD1:2017 CSV	ICP-OES
Hexavalent Chromium (Cr(VI))	IEC 62321-7-2:2017 and/or determination of Total Chromium by IEC 62321-5:2013	UV-Vis/ICP-OES
Polybrominated Biphenyls (PBBs)	IEC 62321-6:2015	GC-MS
Polybrominated Diphenyl Ethers (PBDEs)	IEC 62321-6:2015	GC-MS
Phthalates (DBP, BBP, DEHP, DIBP)	IEC 62321-8:2017	GC-MS

Test Report

Report No. A222042772210100101

Page 3 of 7

Test Result(s)

Tested Item(s)	Result	MDL	Limit
Lead (Pb)	N.D.	2 mg/kg	1000 mg/kg
Cadmium (Cd)	N.D.	2 mg/kg	100 mg/kg
Mercury (Hg)	N.D.	2 mg/kg	1000 mg/kg
Hexavalent Chromium (Cr(VI))	N.D.	8 mg/kg	1000 mg/kg

Tested Item(s)	Result	MDL	Limit
Polybrominated Biphenyls (PBBs)			
Monobromobiphenyl	N.D.	5 mg/kg	1000 mg/kg
Dibromobiphenyl	N.D.	5 mg/kg	
Tribromobiphenyl	N.D.	5 mg/kg	
Tetrabromobiphenyl	N.D.	5 mg/kg	
Pentabromobiphenyl	N.D.	5 mg/kg	
Hexabromobiphenyl	N.D.	5 mg/kg	
Heptabromobiphenyl	N.D.	5 mg/kg	
Octabromobiphenyl	N.D.	5 mg/kg	
Nonabromobiphenyl	N.D.	5 mg/kg	
Decabromobiphenyl	N.D.	5 mg/kg	

Tested Item(s)	Result	MDL	Limit
Polybrominated Diphenyl Ethers (PBDEs)			
Monobromodiphenyl ether	N.D.	5 mg/kg	1000 mg/kg
Dibromodiphenyl ether	N.D.	5 mg/kg	
Tribromodiphenyl ether	N.D.	5 mg/kg	
Tetrabromodiphenyl ether	N.D.	5 mg/kg	
Pentabromodiphenyl ether	N.D.	5 mg/kg	
Hexabromodiphenyl ether	N.D.	5 mg/kg	
Heptabromodiphenyl ether	N.D.	5 mg/kg	
Octabromodiphenyl ether	N.D.	5 mg/kg	
Nonabromodiphenyl ether	N.D.	5 mg/kg	
Decabromodiphenyl ether	N.D.	5 mg/kg	

Test Report

Report No. A222042772210100101

Page 4 of 7

Tested Item(s)	Result	MDL	Limit
Phthalates (DBP, BBP, DEHP, DIBP)			
Dibutyl phthalate (DBP) CAS#:84-74-2	N.D.	50 mg/kg	1000 mg/kg
Butyl benzyl phthalate (BBP) CAS#:85-68-7	N.D.	50 mg/kg	1000 mg/kg
Di-(2-ethylhexyl) phthalate (DEHP) CAS#:117-81-7	N.D.	50 mg/kg	1000 mg/kg
Diisobutyl phthalate (DIBP) CAS#:84-69-5	N.D.	50 mg/kg	1000 mg/kg

Sample/Part Description White plastic**Remark:** The sample(s) had been dissolved totally tested for Lead, Cadmium, Mercury.

-MDL = Method Detection Limit

-N.D. = Not Detected (<MDL)

-mg/kg = ppm = parts per million

-1000 mg/kg = 0.1%

-The test result(s) is(are) presented in reference to the result(s) that reported in A2220427722101001E.

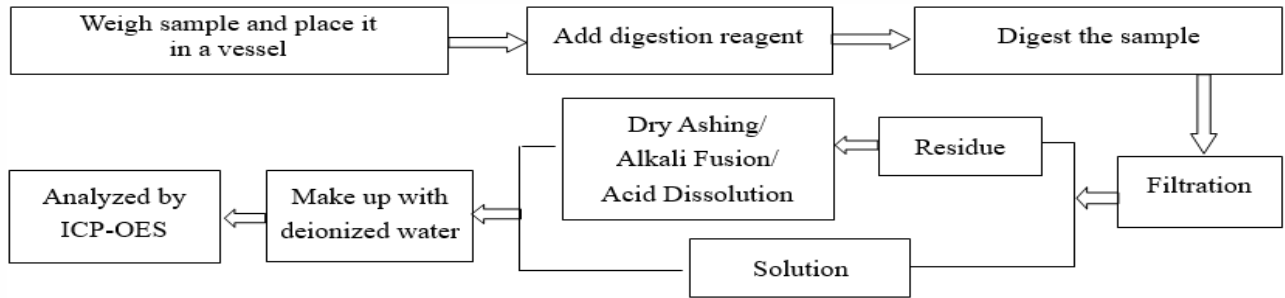
Test Report

Report No. A222042772210100101

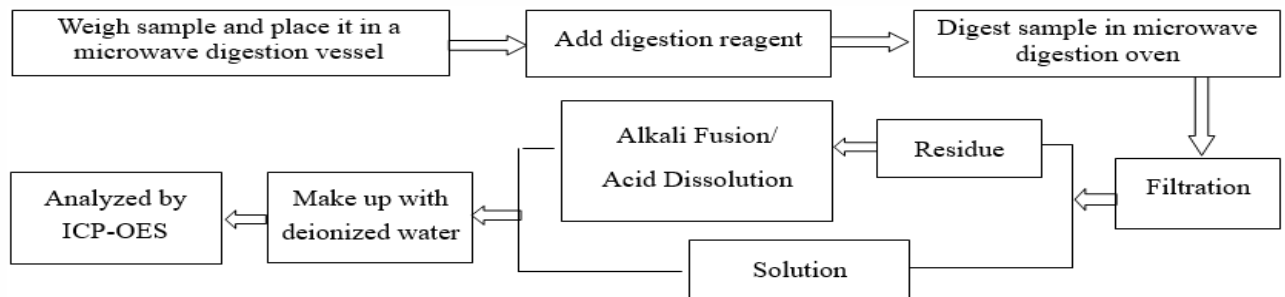
Page 5 of 7

Test Process

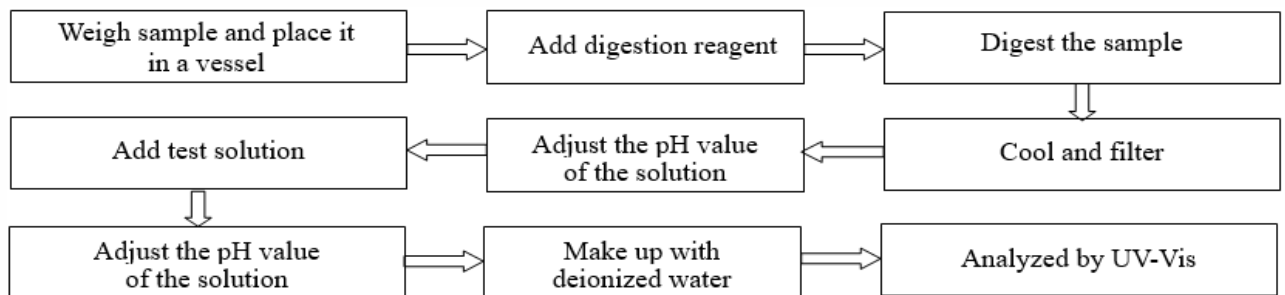
1. Lead (Pb), Cadmium (Cd), Chromium(Cr)



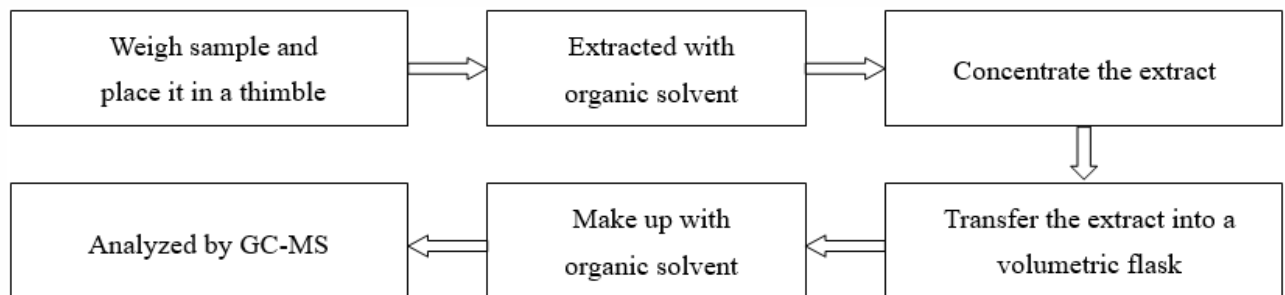
2. Mercury (Hg)



3. Hexavalent Chromium (Cr(VI))



4. Polybrominated Biphenyls (PBBs), Polybrominated Diphenyl Ethers (PBDEs)

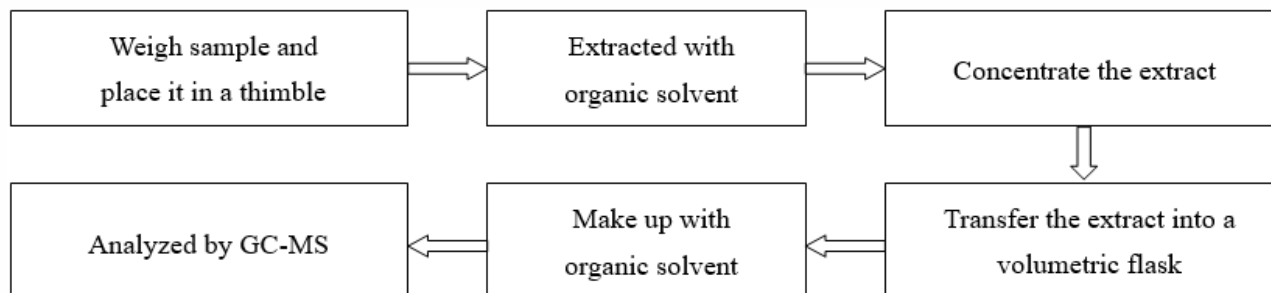


Test Report

Report No. A222042772210100101

Page 6 of 7

5. Phthalates (DBP, BBP, DEHP, DIBP)



Test Report

Report No. A222042772210100101

Page 7 of 7

Photo(s) of the sample(s)



Statement:

1. This report is considered invalid without approved signature, special seal and the seal on the perforation;
2. The Company Name shown on Report and Address, the sample(s) and sample information was/were provided by the applicant who should be responsible for the authenticity which CTI hasn't verified;
3. The result(s) shown in this report refer(s) only to the sample(s) tested;
4. Without written approval of CTI, this report can't be reproduced except in full;
5. In case of any discrepancy between the English version and Chinese version of the testing reports (if generated), the Chinese version shall prevail.

*** End of Report ***

Appendix

Client Reference Information

1506、25041、3028、3035、BZZ001、BZZ002、BZZ004、C30501、C63501、C63502、CA283、CA421、CA428、CA456、CA593、CA758、CAS758、CY320、CY321、CY323、CY337、CY345、CY346、CY364、CY384、CY405、CY465、CY474A、CY91、CYS373、CYS375、CYS378、CYS379、CYS380、CYS382、CYS386、EH、EI、EL、FL、IL、L6.2、LP、M63、MEH、PH、PHB、PHC、PHD、RY04、RY05、SAN、SANW、SCN、SCNW、SDN、SM、SM1、SM2、TJC0501、TJC05014、TJC1、TJC10、TJC10001、TJC10002、TJC10009、TJC10010、TJC10011、TJC10013、TJC10019、TJC10025、TJC10026、TJC1009、TJC12、TJC12511、TJC12512、TJC1255、TJC1256、TJC1257、TJC13、TJC14、TJC15、TJC15001、TJC15002、TJC1501、TJC1505、TJC1506、TJC1507、TJC1509、TJC16、TJC16B、TJC17、TJC19、TJC2、TJC2R、TJC20026、TJC20027、TJC20033、TJC20035、TJC20038、TJC2004、TJC20045、TJC20046、TJC20046B、TJC20047、TJC2004B、TJC2004C、TJC20052、TJC20055、TJC2006、TJC20064、TJC20066、TJC20068、TJC20075、TJC2008、TJC21、TJC22、TJC25012、TJC25013、TJC25014、TJC25017、TJC25018、TJC25019、TJC25020、TJC25022、TJC25023、TJC25024、TJC25025、TJC25027、TJC25028、TJC2503、TJC25030、TJC25032、TJC25035、TJC25038、TJC25040、TJC25041、TJC25043、TJC25044、TJC25046、TJC25047、TJC25048、TJC25053、TJC25054、TJC25056、TJC25057、TJC25058、TJC2508、TJC2508B、TJC2509、TJC2509B、TJC2509C、TJC2509D、TJC2510、TJC2511、TJC25415、TJC25429、TJC25430、TJC25431、TJC25444、TJC25450、TJC25456、TJC25460、TJC2547、TJC25470、TJC25475、TJC25476、TJC25477、TJC25478、TJC25479、TJC26、TJC28、TJC2A、TJC2B、TJC2G、TJC3、TJC3001、TJC3002、TJC3008、TJC31、TJC35006、TJC39610、TJC39614、TJC39615、TJC39617、TJC3963、TJC3965、TJC3966、TJC3967、TJC3969、TJC3B、TJC4、TJC42、TJC4201、TJC4202、TJC4203、CA430、CA431、TJC43、TJC4501、TJC5、TJC5001、TJC50013、TJC50014、TJC5001A、TJC5001B、TJC50012、TJC50020、TJC5006、TJC5007、TJC5009、TJC5010、TJC50801、TJC52、TJC56、TJC57、TJC58、TJC59、TJC6、TJC60、TJC62、TJC6201、TJC6202、TJC65、TJC65001、TJC65002、TJC70001、TJC79201、TJC79202、TJC79203、TJC8、TJC80001、TJC80002、TJC86001、TJC9、TJC92001、VH、WH、ZH、MR、JL、SY、MC、CY672、CYS672、C30502、TJC25480、TJC20078、TJC10020、WB25B、TJC20074、TJC12519、TJC50022、TJC25064、TJC25065、TJC25481、TJC25482、TJC25061、TJC15011、TJC15012、TJC15013、TJC50015、TJC20080、TJC50016、TJC20081、TJC20082、TJC33001、TJC20083、TJC6203、TJC15014、PH-nYI、TJC25066、TJC50023、TJC20084、TJC39620、TJC4001、TJC1004、TJC39615、TJC20085、TJC10029、TJC2509E、TJC25067、TJC10031、TJC79204、TJC79205、TJC12520

Statement:

1. The Appendix Information was/were provided by the applicant who should be responsible for the authenticity which CTI hasn't verified.
2. The Appendix Information is/are the supplement(s) for the Report A222042772210100101.